

The Rich Young Ruler

Tune: Where He Leads I'll Follow

Patsy Stevens



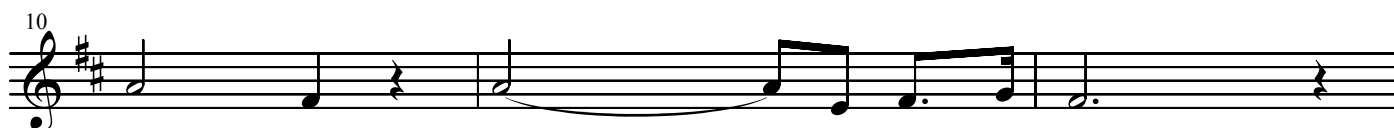
A rul - er came to Christ, asked Him one day, "What must I do to in - her - it
"Sell all my hous - es and cat - tle and such; This seems like an ut - ter - ly im -



e - ter - nal life?" "Keep the com - mand - ments. you well know the ten."
pos - si - ble task. I can - not give them up. This is too much.



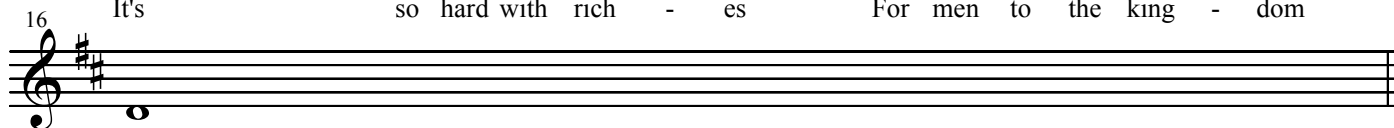
"I have kept these all my life, So what lack I then?" "Go and sell what
It is more than I ex - pect - ed Him to - o ask." Then he left so



you have, Give it to the poor.
sad - ly. Je - - - - sus loved him though.



You will have great trea - sure, And of this you will be
It's so hard with rich - es For men to the king - dom



sure."
go.